

# **WIDENING ACCESS AND PARTICIPATION IN HIGHER EDUCATION:**

a coordinated response to  
the UK's attainment and  
progression gap

CODE 7656

**Thursday 14th November 2019**  
**Central London**

1st Delegate Rate **£289**+VAT

2nd Delegate Rate **£242**+VAT

## **KEYNOTE SPEAKERS INCLUDE:**

**Stephen Gorard**

*Professor of Education and Public Policy,  
Durham University*

**Sam Kalubowila**

*Head, Greater Manchester Higher*

**Kirsty Wilkinson**

*School and College Liaison Manager,  
Loughborough University*

# CONFERENCE AIMS

The role of education in supporting social mobility is well rehearsed. One of the key recommendations of the All-Party Parliamentary Group on Social Mobility's *Closing the regional attainment gap* report is stronger collaboration across the system. The Office for Students (OfS) is calling on higher education institutions to radically "rethink how they are judging merit", while the Education Secretary demands progress in efforts to "improve access and successful participation for underrepresented groups."

Widening access activities can provide schools and colleges with invaluable opportunities to meet their obligations for specific pupil groups and help build evidence for Ofsted, Gatsby benchmarks and Progress 8. However, the lack of common targeting and terminology across the educational continuum can result in working at cross purposes. The OfS is investigating ways for universities to consider individualised data in admissions, such as free school meals eligibility, rather than using postcode measures of education and income.

The Widening Access and Participation in Higher Education conference exists to join up thinking and practice across schools, colleges and further and higher education institutions. Offering a clear understanding of the wider government agenda around social mobility, it will cover themes including better use of data for improved tracking and benchmarking; funding, key targets and new guidance from the regulators; and future trends in raising aspiration and widening access and participation. The only such event to be researched directly with key stakeholders from across the education lifecycle, this conference will focus on practical examples to take away and implement within your own organisation.

## Confirmed speakers include:

### Richard Shiner

*Head of Access and Participation Evaluation, Office for Students*

### Susannah Hume

*Associate Director for What Works, King's College London*

### Stephen Gorard

*Professor of Education and Public Policy, Durham University*

### The Brilliant Club

### Sam Kalubowila

*Head, Greater Manchester Higher*

### Kirsty Wilkinson

*School and College Liaison Manager, Loughborough University*

### David Birch

*School Improvement Adviser and Consultant*

## BENEFITS OF ATTENDING:

- Extend your understanding of the wider government agenda around social mobility and its implications for your organisation
- Collaborate with key stakeholders across the education system in the drive to close the attainment and progression gap in the UK
- Hear from the Office for Students about the next steps for widening access and participation, including key targets, guidance and best practice
- Benefit from transferable examples of impact evaluation from schools, colleges, universities, NCOPs and other organisations
- Develop coordinated approaches across the continuum of education, from primary and secondary school through to colleges and universities
- Build a portfolio of practical resources which can be embedded into your own strategy
- Engage directly with policymakers and thought leaders, as well as colleagues with shared challenges across the education sector

## WHO SHOULD ATTEND:

This conference has been designed to bring together professionals from across the education sector, including primary, secondary, sixth form, further and higher education.

### Job titles include:

- Deans and Pro-Vice Chancellors for Education
- Principals and MAT CEOs
- Headteachers, Assistant and Deputy Headteachers
- Heads of Sixth Form
- Directors/Heads of Widening Participation and their teams
- Directors/Heads of Admissions and Fair Access and their teams
- Directors/Heads of Community Engagement and their teams
- Directors/Heads of Marketing, Heads of Outreach and their teams
- Directors/Heads of School Liaison and Student Recruitment and their teams
- Disability Practitioners
- Educational Researchers
- Equal Opportunities and Social Mobility Officers
- NCOP Practitioners

# PROGRAMME

TIME

<b>Registration and coffee in the networking area</b>	8.30 – 9.30am
<b>Chair's opening address</b>	9.30 – 9.40am
<b>David Birch</b> <i>School Improvement Adviser and Consultant (confirmed)</i>	
<b>Closing the attainment and progression gap in the UK</b>	9.40 – 10.00am
<ul style="list-style-type: none"><li>● Assessing the impact of the government's social mobility goals throughout the education system, from early years funding through to pupil premium and widening access targeting and activity</li><li>● Acknowledging the gap in attainment and progression, as set out in successive reports from the Social Mobility Commission, APPG on Social Mobility and more, and putting forward workable strategies to close it</li><li>● Tackling the implications of the Augar Review of Post-18 Education and Funding for those working to improve access and successful participation for underrepresented groups</li></ul>	
<b>Baroness Morris of Yardley</b> <i>Vice Chair, All Party Parliamentary Group on Social Mobility (invited)</i>	
<b>The next steps for widening access and participation</b>	10.00 – 10.20pm
<ul style="list-style-type: none"><li>● Providing an update on the Office for Students' work to widen access and participation in further and higher education, including analysis of access and participation plans</li><li>● Evaluating the impact of widening participation activities, utilising ever more robust data to inform targets and benchmarks that are aligned throughout the education system</li><li>● Sharing details of the latest funding, guidance and best practice available to schools, colleges and universities</li></ul>	
<b>Richard Shiner</b> <i>Head of Access and Participation Evaluation, Office for Students (confirmed)</i>	
<b>What works? Evaluating the impact of your widening participation activities</b>	10.20 – 10.40am
<ul style="list-style-type: none"><li>● Discussing best practice in the evaluation of work to widen access and participation in further and higher education – what needs to be evaluated in terms of what actually works and how can it be tracked effectively?</li><li>● Sharing examples of best practice from King's College London and other institutions with consideration of immediate, medium and longer term impact</li><li>● Outlining the establishment and work of Transforming Access and Student Outcomes in Higher Education (TASO) and how schools, colleges and universities can engage with the programme</li></ul>	
<b>Susannah Hume</b> <i>Associate Director for What Works, King's College London (invited)</i>	
<b>Questions and discussion</b>	10.40 – 11.00am
Coffee and networking	11.00 – 11.20am
<b>Quick fire case study session</b>	11.20 – 12.20pm
<b>Developing better coordination between schools and further and higher education</b>	
<ul style="list-style-type: none"><li>● With an emphasis on practical examples of strong collaboration around target student groups across the education system, this session will feature four 15 minute case studies from schools, NCOPs and HEIs which will be followed by a facilitated question and answer session aiming to consolidate practical applications.</li></ul>	
<b>The Brilliant Club</b> <i>(confirmed)</i>	
<b>Sam Kalubowila</b> <i>Head, Greater Manchester Higher (confirmed)</i>	
<b>Kirsty Wilkinson</b> <i>School and College Liaison Manager, Loughborough University (confirmed)</i>	
<b>Questions and discussion</b>	12.20 – 12.40pm
Lunch and networking	12.40 – 1.30pm

# PROGRAMME

TIME

## Chair's afternoon address

1.30pm

**David Birch** *School Improvement Adviser and Consultant (confirmed)*

## Breakout session: Evaluating and demonstrating impact

1.30 – 2.05pm

Offering delegates the opportunity to break out into smaller groups focused around widening access and outreach, graduate destinations and student success. Each session will last 30 minutes, after which the group leaders will return to the main plenary to share their reflections and discuss how lessons learned can best be implemented.

### Stream A: Access

**Jenni Woods** *Head of Access, Participation and Inclusion, Kingston University (invited)*

### Stream B: Destinations

**Laura Mason** *Chief Executive, NYBEP (invited)*

### Stream C: Success

**Ed Foster** *Student Engagement Manager, Nottingham Trent University (invited)*

## Questions and discussion

2.05 – 2.25pm

Coffee and networking

2.25 – 2.35pm

## Better use of data for improved tracking and benchmarking

2.35 – 2.55pm

- Offering expert advice in research and data collection, assessing the impact of mechanisms including randomised control, group trials and more
- Tracking progression throughout the education system in the age of GDPR, tackling challenges in access and interoperability of key national datasets
- Showcasing what is achievable in terms of widening access and participation data, benchmarking, monitoring and evaluation

**Mark Corver** *Founder, DataHE (invited)*

## Future trends in widening participation, access and social mobility

2.55 – 3.15pm

- Reviewing the latest research, policy and practice in widening participation, access and social mobility, potential implications and applications
- Considering the future of education funding and policy with advice on what schools, colleges, universities and other stakeholders should be doing now to plan and prepare
- Consolidating the key themes from the conference and suggesting next steps

**Stephen Gorard** *Professor of Education and Public Policy, Durham University (confirmed)*

## Questions and discussion

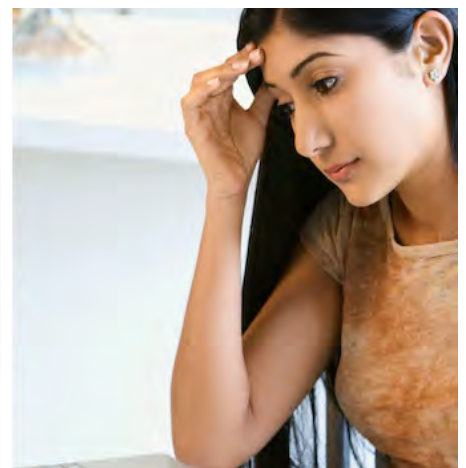
3.15 – 3.30pm

## Reflection and action plans

3.30 – 3.55pm

## Chair's closing remarks

3.55 – 4.00pm





*Very interesting and engaging keynote speakers - fantastic breadth of knowledge and experience.*

Team Manager, Education  
Access and Partnerships,  
Nottinghamshire County Council



*Brilliant conference with lots of refreshing ideas, really good content and delivery.*

Assistant Head Teacher,  
Winchmore School



*Professional and impressive conference with inspiring, passionate and empowering speakers!*

Lead Intervention Teacher,  
Hampton College

**Keynote**  
educational

**Keynote Educational Limited**  
PO Box 130, Wilmslow, SK9 1WD

T: **01625 532974**

F: **01625 532524**

E: [online@keynote.org.uk](mailto:online@keynote.org.uk)

[@KeynoteCourses](https://twitter.com/KeynoteCourses)

# SAFEGUARDING IN SCHOOLS CONFERENCE:

## working together to keep children and young people safe

CODE 7657

### Thursday 28th November 2019 Central London

**Keynote Speakers Include:**

**Judy Shaw**

*President, NAHT and Headteacher, Tuel Lane Infant School*

**Anna Cole**

*Parliamentary and Inclusion Specialist, ASCL*

**Jon Drake**

*Lead for Safeguarding, National Police Chiefs' Council*

Offering a clear understanding of the latest regulatory requirements for safeguarding, the Safeguarding in Schools conference has been established to promote best practice in effective collaboration across statutory and non-statutory bodies. Focusing on the intersection between safeguarding, wellbeing, behaviour and attendance, the agenda will cover themes including successful emotional and mental health response arrangements; effective approaches to gang-based violence including county lines, CSE and CCE; and best practice in online safety, peer-on-peer abuse and contextual safeguarding. The only such event to be researched directly with key stakeholders from across primary and secondary schools, sixth form colleges, local authorities and more, this conference is built around speakers and sessions which will equip you with practical solutions to take back to your school.

Join us at the Safeguarding in Schools conference to gain new knowledge from professionals with innovative and transferable approaches to safeguarding. Benefit from in-depth case scenario sessions and case studies which will leave you informed, confident and empowered to safeguard the children in your care.